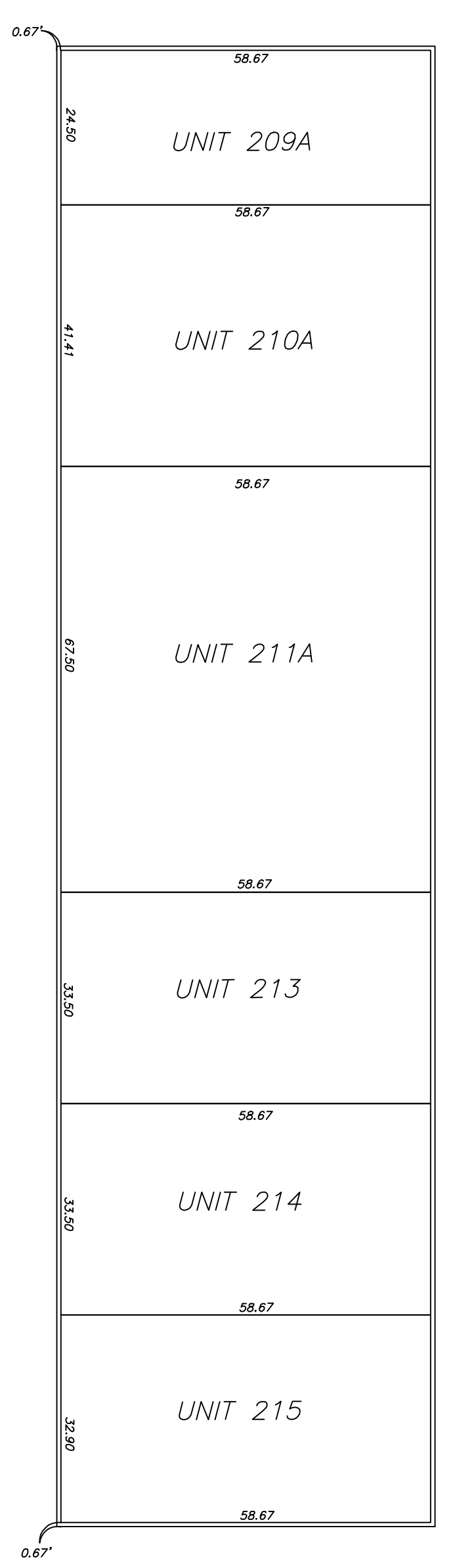


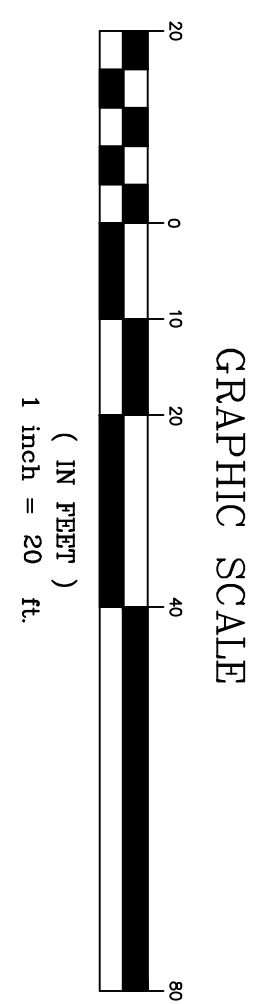
NOT TO SCALE
WEST ELEVATION

BUILDING FLOORPLAN



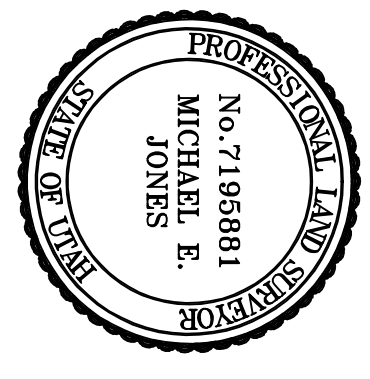
SQUARE FOOTAGE TABLE

TOTAL BUILDING =	14,029	SQ. FT.	UNIT 211A =	3,969	SQ. FT.
TOTAL APARTMENT =	13,969	SQ. FT.	UNIT 214 =	1,965	SQ. FT.
UNIT 209A =	2,429	SQ. FT.	UNIT 215 =	1,930	SQ. FT.
UNIT 210A =					



DAVIS COUNTY RECORDER #
STATE OF UTAH, COUNTY OF DAVIS, RECORDED AND FILED AT THE REQUEST OF
DATE: _____ TIME: _____ BOOK: _____ PAGE: _____

DAVIS COUNTY RECORDER



CONDOMINIUM PLAT
DAKAR CONDOMINIUMS AMENDED
A UTAH CONDOMINIUM PROJECT AMENDING UNITS 209, 210, 210, AND 211 OF DAKAR CONDOMINIUMS LOCATED IN THE WEST HALF OF SECTION 2, TOWNSHIP 1 NORTH, RANGE 1 WEST, SALT LAKE BASE AND MERIDIAN, DAVIS COUNTY, UTAH IN NORTH SALT LAKE BASE AND MERIDIAN, DAVIS COUNTY, UTAH IN NORTH SALT LAKE.